

Melodie: 17. Jh.
Arrangement: sdc 2004

Lobe den Herren, den mächtigen König

www.gesangbuchlieder.de

Tempo: ca. 106 bpm
Vorspiel: Tonangabe

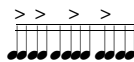
Partitur in Bb-Stimmung

f

M.: Sopran

G Am Bm C Dsus⁴ D G

Alternativ Rhythm:
(Techno-Style)



G Am Bm C Dsus⁴ D G

Musical score for the first system, featuring two vocal staves and two piano accompaniment staves. The key signature is one sharp (F#). The bass line includes the following chord labels: G/D, Cmaj7, G/B, Am7, and D7.

Musical score for the second system, featuring two vocal staves and two piano accompaniment staves. The key signature is one sharp (F#). The bass line includes the following chord labels: G, Am, Bm, G/B, and C. A Coda: F label is present in the top right corner.